







## MEI CASHFLOW STS V7.22

Support and Test Systems

### RELEASE DESCRIPTION

  STS Provides both configuration and diagnostics support for the Cashflow 7000 Coin Changer, EC6000 and EC6970 Changers, Cashflow 8000 Changer, Cashflow 7906 Coin Changer, Cashflow SC Series, SC Advance, SC Recycler, CV1000, CX and Series 2000 Bill Acceptors. Also provides configuration support for the Cashflow 690 Coin Changer, Cashflow 9500 Coin Acceptor, Vending Audit Module, Conlux MCM5 Coin changer and the VNR.  

Cashflow STS can be used to configure devices locally or remotely via Cashflow Programming Modules - HII or USB or with the PPM Advance.

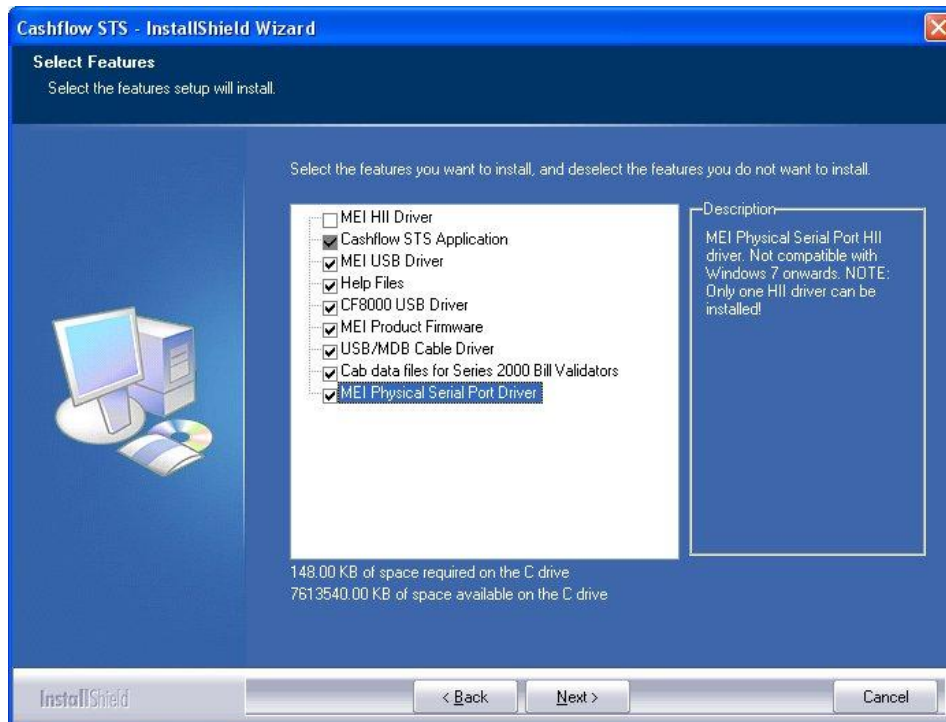
Cashflow STS can also be use to remotely configure Cashflow 8000 and Vending Audit Module and CX via a USB Flash Drive.

 Cashflow STS also provides Audit support for the Cashflow SC Series, SC Advance, SCR, CX and Series 2000 Bill Acceptors as well as for the VNR.

### INSTALLATION INSTRUCTIONS

Insert the CD and if the installation does not start automatically, double-click on Setup.Exe in the CD directory and follow the on-screen instructions.

STS V7.22 automatically installs the Windows 7 HII driver. If you have an XP system and want to install the older physical serial port driver for compatibility reasons, simply select the custom install option on installation, de-select the MEI HII driver feature and then select the MEI Physical Serial Port Driver as shown below.





The driver can also be changed by re-running the installer, selecting the modify option and then selecting the appropriate features as detailed above.

NOTE: When installing or uninstalling the MEI Physical Serial Port driver the PC **MUST** be rebooted afterwards.

## START-UP

When using STS for the first time, enter the License Key provided by MEI. If prompted, log in as "**admin**" with no password. Then you may add users or change passwords as required. You may also notice the first time you start the system that it may take a long time for the program to start, this is because of the language update taking place. This will only occur on the first start up.

## SYSTEM REQUIREMENTS

The recommended system configuration for Cashflow STS is provided in the table below:

Component	Recommended Requirement
Processor	(300 MHz or higher recommended)
RAM	256 MB or greater
Hard Disk	160MB before installation and 80 MB after the installation is complete
Display	Super VGA monitor with the screen resolution set to at least 800 x 600, small fonts setting, and 256 colours or greater
Operating System	Windows XP, Windows Vista, Windows 7, Windows 8 and Windows 10 are supported.
Internet Explorer	Microsoft Internet Explorer 6 onwards.
Privileges	Administrative privileges on the system.
Mouse	Microsoft IntelliMouse or other compatible pointing device



## NEW FEATURES

Description	Reference
Add Customer Configuration Option for BNF Jam Improvement Software	STS-1091
Add Classification report to SCR Products	STS-1078
Add Soft Options for COAS support to CF7000 template	STS-1090
Add new option. Audit Data Reporting style to CF-7000 Template	STS-1080
Add security Mode option to the Customer configuration Structure	STS-1087
Add Lottery Ticket Enable mode to SCR template	STS-1088
New Configuration setting "Additional Feature Options"	STS-1076
Enable Configuration of EE items for S2000	STS-1073

## BUG FIXES

Description	Reference
Error in Sc Jam Rate calculation	STS-1084
Result of SC Advance Diagnostics Right Edge Sensor is not displayed	STS-1095

Details on previous releases can be found at the end of this document.



## ADVANCED SET-UPS

### Support Database

The Support Database may be shared across a network allowing you to:

- Manage all STS users from a single point.
- Manage and share the MEI License Key across all PCs.
- View latest Handheld status from any network PC.
- View SC Series Audit Records retrieved or downloaded by any User.

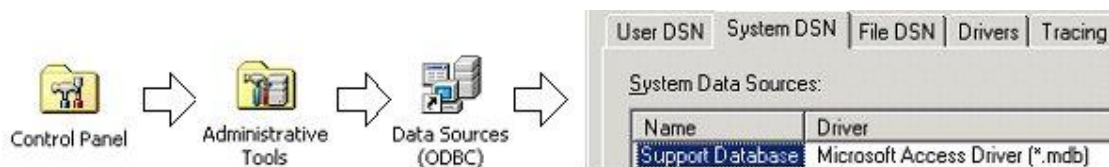
### Set-up the Database:

Copy the **Support Database.mdb** file from the "Documents and Settings\All Users\Application Data\MEI\Cashflow STS\Configuration Data" directory onto a network drive.

### Network PCs:

Install Cashflow STS on each PC to be networked.

Open up the Control Panel and open Administrative Tools and double-click on *ODBC Data Sources*.



Go to the *System DSN* tab and double-click on "Support Database". Click **Select** and locate the new *Support Database.mdb* file on the shared network drive.



## PREVIOUS RELEASE DETAILS

### V7.21

#### NEW FEATURES

Description	Reference
Add new SCR Audit fields.	STS-1034
Add new fields to MEI CX Bill Validator audit.	STS-1032
Add new configuration options to MEI CX Bill Validator product.	Various
Add "Extended Coin Type" options to CF7000 and CF8000 products	STS-959
Added excel export functionality for MEI CXB Bill validator.	STS-965

#### BUG FIXES

Description	Reference
Fix crash when CX audit exported with BNF filename checkbox selected.	STS-1014
Fix crash when PPM connected with invalid audit files.	STS-1028
Corrected issue with Series 2000 audit files with Philippines billset loaded.	STS-1038
Fix issue when loading Seychelles billset to SC Advance.	STS-1027

### V7.20

#### NEW FEATURES

Description	Reference
Add support for MEI CX Bill Validator.	STS-867
Add support for checking SC Advance calibration result.	STS-978
Add options to support CF7900 Dual Cashless functionality.	STS-967
Add Bill Recycler options to CF7000 and CF8000 products	STS-954
Add Hanging Note option to SC Advance product	STS-965
Add VNR data to Series 2000 raw audit data file.	STS-508
Add support for programming CF7000 in bootloader mode.	STS-614
Add functionality to retrieve all data from unit in one zip file.	STS-990

#### BUG FIXES



Description	Reference
Correct issue when re-running EC6000 diagnostics	STS-216
Corrected issues with CF7000/CF8000 diagnostics	STS-422, STS-588, STS-654, STS-655, STS-656.
Cashflow SC sudit file not stored after being transferred from PPM Advance.	STS-953
SCR Total bank notes stacked audit field not being updated correctly.	STS-975
Engineering audit (for SC/SC Advance and SCR) is now cleared as part of the audit screen "reset audit" button functionality.	STS-852

## **V7.12**

### **NEW FEATURES**

Description	Reference
Update VN/AE Cabinet files	STS-932
Allow downgrade of PPM Advance firmware	STS-937
Add support for ccTalk addresses on SC Advance	STS-930
Add new cashless options to CF7000 and CF8000 template files.	STS-912, STS-914, STS-935
Add check for valid SC/SCR firmware before loading files into STS configuration	STS-933
Update PPM Advance firmware to V1.05	STS-939
Add support for Platform bezel to SCR	STS-919
Improve number of files that can be bulk imported/exported	STS-934
Updated location of SCR audit items in line with latest firmware	STS-931
Add SCR component (TRT, RCR and IFC) serial numbers to configuration and audit	STS-927

### **BUG FIXES**

Description	Reference
Correct error reading Series 200 devices using STS versions V7.11 and V7.11.01.	STS-920
Correct crash that occurred when importing SC Advance audit file with V7.11.	STS-929



## V7.11

### **NEW FEATURES**

Description	Reference
Add support for SC "Improperly Seat Head" detection on SC Advance.	STS-896
Updated SCR configuration options, including the addition of Multi-note Escrow capability.	STS-824/854/855/888
Added PPM Advance V1.04 release firmware.	STS-898
Add new options to CF7000 and CF8000 template files.	STS-850/857/884/885/890
Add BNF Audit definitions to help file.	STS-893
Add support for pasting license key	STS-897

### **BUG FIXES**

Description	Reference
Correct issue for connected Series 2000 CPMs (BPM) using COM ports higher than 9.	STS-882
Remove USB error messages if SC Advance is not using latest firmware.	STS-838
Allow feature list to scroll for current user in User Manager.	STS-891
CF7000 Cashless Option Descriptions incorrect	STS-578

## V7.10

### **NEW FEATURES**

Description	Reference
Add support for SCR device to STS	STS-778
Add pop up message when PPM Advance is first registered to inform customer that PPM advance is now registered to this customer/license.	STS-859
Add support for PPM Advance SCR functionality	STS-781
Add new cashless/SMS options to CF7000 and CF8000 template files.	STS-845/7
Add support for new SC Advance variant algorithm.	STS-838

### **BUG FIXES**

Description	Reference
-------------	-----------



Make errors more user friendly when incomplete license key entered.	STS-841
---	---------

## **V7.07**

### **NEW FEATURES**

Description	Reference
Allow users to connect PPM Advance units registered to other units without deleting files or unregistering.	STS-810
Add controls to enable/disable the automatic retrieve/clear of audit data on the PPM Advance.	STS-792
Add second audit merge table (pre-merge) for CF8000 integrated cashless module.	STS-818
Add support for new CF7000 options.	STS-827, STS-797
Add support for new CF9500 security options.	STS-804-807
Improve data files display on Handheld window.	STS-789
Improve Load audit data screen.	STS-790

### **BUG FIXES**

Description	Reference
Fix for Handheld form crash.	STS-659

## **V7.06**

### **NEW FEATURES**

Description	Reference
Add EVA-DTS export format capability for EC6970 product.	STS-796
Warn user when deleting firmware files from PPM Advance.	STS-793

### **BUG FIXES**

Description	Reference
"Path too long" installation error seen occasionally.	STS-722
Configuration not removed when firmware file used in other config file is deleted from Handheld devices	STS-799

## **V7.05**

### **NEW FEATURES**





Description	Reference
Add support for EC6970, battery changer.	STS-600
Add CPM support for EC6970	STS-701
Update STS to be able to read credits from the BPM	STS-719
Update STS to allow credits to be read on CPM	STS-729
Add setting to enable/disable simple menu on PPM Advance	STS-727
PPM Advance documentation added to installer	STS-753
Add checking of USB/MDB cable firmware version	STS-731

### **BUG FIXES**

Description	Reference
STS Diagnostics does not work when working language is Spanish.	STS-720
Corrected error with CF8000 diagnostics	STS-745
Error message not displayed when invalid software type downloaded to Series 2000.	STS-756
"Unable to action" USB error for Get Unit Name is displayed every time a CPM is plugged in.	STS-757

### **V7.04**

### **NEW FEATURES**

Description	Reference
Add support for SC Advance Barcode conversion option	STS-593
Add support for SMS and Dual Cashless functionality on CF8000.	STS-577, STS-601
Additional changes to support PPM Advance.	STS-589, STS-592, STS-616, STS-619, STS-620
Add support for new acceptance classification modes on SC Advance	STS-598
Add support to label files being downloaded to PPM Advance.	STS-622
Add cashbox cleanliness audit items for SC Advance	STS-625
Allow users to access SC Advance feature with SC license feature.	STS-605

### **BUG FIXES**

Description	Reference
-------------	-----------



Total JAMs calculation incorrect for SC Advance	STS-603
Correct reading of ccTalk encryption key on SC Advance	STS-623
CF8000 in never recognised is STS is started with no COM ports available	STS-541
Total JAMs calculation incorrect for SC Advance	STS-603
Second Line Recoveries audit item incorrectly shown as a negative number	STS-604



## V7.03

### **NEW FEATURES**

Description	Reference
Add support for Series 2000 and VNR	STS-381
Add support for CV1000 Bill Validator	STS-319
Add Bill security settings back into SC configuration and into SC Advance configuration.	STS-443
Add ability to write Series 2000 firmware to BPM.	STS-464
Add support for PPM advance to STS	STS-466
Add new option to CF8000 USB file to support 'Audit by Media' functionality	STS-491
Add new option to CF8000/VAM USB file to support 'SMS Modem' test message functionality	STS-492
Add CF7000 Flashloader V1.06 to STS	STS-519
Add ability to save comments/notes when saving Bill Validator audits to database.	STS-441
Update installer to allow user to specify which HII driver they wish to use.	STS-490
Update STS to remove user initial log in.	STS-520
Update SC advance template to add EBDS Flash Recovery feature.	STS-538

### **BUG FIXES**

Description	Reference
CF7000 Flash Loader downloaded to the CPM instead of CF7906 Flash Loader	STS-433
Bat Bezel setting incorrect in SC Advance template.	STS-448
When downloading configuration to PPM via handheld screen, progress is no longer displayed.	STS-463
Unit should not increment 'Sum of all Jams' audit data after reporting 'Stacker Jam'	STS-497
STS incorrectly increments 'Hard Jam Rate' field for invalid notes	STS-498



## **V7.02**

### **NEW FEATURES**

Description	Reference
Add support for CF7906 Coin Changer.	STS-340
Add support for Conlux MCM5 Coin Changer.	STS-319
Add BNF Audit fields to SC and SC Advance audit screens.	STS-242
Improve detection time of connected products.	STS-370
Update STS installer to incorporate automatic driver installation	Various
Add reporting of SC Cashbox cleanliness to SC Audit Failures tab.	STS-341
Add capability to save CF7000 configuration in raw (DTS) data format.	STS-409

### **BUG FIXES**

Description	Reference
Corrected issues when combining SC advance audit files.	STS-376
SC Advance BNF audit fields were not shown correctly.	STS-377
Unable to parse DEX files in V7.01	STS-354
Unable to change CF690 float levels using STS V7.01	STS-353

## **V7.01**

### **NEW FEATURES**

Description	Reference
Add support to STS for SC Advance Bill Acceptor configuration and audit.	STS-90
Add support to Cashflow Programming Module (USB) for SC advance Bill Acceptor	J79250-2
Add capability to STS to allow SC firmware to be updated whilst connected to IGT host.	STS-267
Modify CF9500 template and CTO mode to support ccTalk encryption added with V5.03 of CF9500 firmware.	STS-308
Updates to CF8000 and Audit Module templates.	Various



## **V7.00**

### **NEW FEATURES**

Description	Reference
Add support for Cashflow 8000 Coin Changer	STS-89
Add support for Vending Audit Module	STS-104
Add Install Wizard.	STS-101
Add Support for USB Flash Drive as Handheld.	STS-98
Add Vending Audit File Parser	STS-102
Add support for Windows 7	

### **BUG FIXES**

Description	Reference
Display error message when files selected for save is read only	STS-10
Channel Inhibits are now only written to the CF9500 if the Primary or Secondary Channels sets are in the profile, either by direct connection, or via CPM. This means changes to the Customer Token channel inhibits must be done with the other 2 channel sets specified. Any changes to channel inhibits should include all 3 channel sets to prevent channels being inhibited.	STS-87
Double clicking a STS profile now opens STS and loads the file.	STS-92
Ensure correct channel set file selected for product	STS-105
Improve firmware download for CF7000	STS-88
Include new Flash Utility file for CF7000 firmware download	STS-132

## **V6.50**

### **NEW FEATURES**

Description	Reference
Add support for multiple channel set revisions.	STS-11
Enable STS to run on Microsoft windows Vista	STS-23
Add support for 32-bit CRC's on SC series bill acceptors	STS-14
Channel set specific configuration items are now read directly from the latest channel set file.	STS-12
CF7000 diagnostic error messages will now be translated into one of the STS supported languages if selected.	STS-42
Add ccTalk Encryption key to SC Series configuration	STS-31



### BUG FIXES

Description	Reference
Skip Item check box did not work on Cashflow diagnostics top module form. Now fixed	STS-52
Blank/empty items are no longer written to SC series product even if selected.	STS-43

### V6.00

### NEW FEATURES

Description	Reference
Add support for CF7000/CF9500 calibration	STS-9

### BUG FIXES

Description	Reference
Corrected error downloading PPM audits	STS-16
Need to cope with international symbols for decimal point.	STS-18
Corrected error writing CF9500 channelset files to CPM.	STS-25

### V5.00

### NEW FEATURES

Description	Reference
Add diagnostics support for CF7000 and EC6000 coin changers.	SAL0132-WCR
Modify code to save actual bill names in configuration files rather than Bill 1, Bill 2 e.t.c.	SAL0130-WCR
Add multiple cassette calibration for CTO test if required.	SAL0137-WCR
Add CF690 CTO capability	SAL0145-WCR

### BUG FIXES

Description	Reference
Corrected timing issue when doing CF9520 firmware updates.	SAL0128-WCR
Corrected minor issue that occurred when downloading both firmware and configuration to a CF690.	SAL0129-WCR
Tube restriction map sometimes displayed incorrectly when alternating between CF7000 and EC6000 configurations.	SAL0131-WCR
SC series configurations generated with STS V4.50 were incompatible with STS V4.00.	SAL0134-WCR
Error parsing SC Diagnostic result files containing the configuration test.	SAL0143-WCR



## V4.50

### **NEW FEATURES**

Description	Reference
Add support for EC6000 Coin Changer	SAL0089-WCR
Add firmware upgrade support for CF9520 with V4.00 firmware or greater	SAL0109-WCR
Unused configuration and channel data is now cleared for CF7000 and EC6000 configurations	SAL0113-WCR
Redefinition of SC Series Audit acceptance rate calculation	SAL0110-WCR
Add support for MEI SC Series Easitrax Cashbox	SAL0112-WCR

### **BUG FIXES**

Description	Reference
Downloading CF7000 firmware to a handheld from the Handheld screen now works	SAL0108-WCR
Update all translations	SAL0111-WCR
Correct various string handling errors	SAL0114-WCR
Corrected several production related issues	SAL0115-WCR

## V4.00

### **NEW FEATURES**

<b>Description</b>	<b>Reference</b>
Add support for CF690 Coin Changer	SAL0004-WCR
Add support for multiple languages (FR,DE,IT and ES to start)	SAL0026-WCR
Extend flexibility of licensing scheme	SAL0025-WCR
Modification to SC Series Audit acceptance rate calculation	SAL0022-WCR
Allow import of more SC audit files at one time	SAL0024-WCR

### **BUG FIXES**

<b>Description</b>	<b>Reference</b>
Progress bar not always shown during handheld auto upgrade	SAL0030-WCR
Added error check when firmware included in download but no file available	SAL0021-WCR
Corrected f/w and configuration combined download to CF7000	SAL0028-WCR
Modification to the SC Audit screens	SAL0027-WCR
Improved error handling during CF7000 CTO Operation	SAL0068-WCR



**V3.01/V3.00**

**NEW FEATURES**

Description	Reference
Provide Configuration Support for the Cashflow 7000 Coin Changer.	SAL-G01-WIN
Add communication mechanism for the DTS/DDCMP to STS for CF7000 Communications.	SAL-G02-WIN
Update Diagnostics in line with final implementation on Cashflow SC Series Bill Acceptor	SAL-G03-WIN

**BUG FIXES**

Description	Reference
Export of Audit file does not include Bill Names	SAL-127-WIN
CPM Download file selection box needs correct titles and file-filters for type of device.	SAL-131-WIN
CPM Error viewer opens multiple windows.	SAL-132-WIN
Uninstall causes "Fatal Error" message.	EXBD-66YS8 SAL-133-WIN
Security Breach on NTFS for SC Series Configuration file	SWMH-69LNPY EXBD-68QLEB
CPM Full Profile download for CF9500 not complete	SAL-139-WIN
Issue with multiple downloads from STS to SC Series for Boot 1.06 or below.	SAL-140-WIN

**V2.00**

**NEW FEATURES**

Description	Reference
Added Configuration functionality for the Cashflow 9500 Coin Acceptor.	SAL-116-WIN
Added configuration controls for Bit Values, Integer Values (with Spin Button) and List Boxes.	SAL-117-WIN
Added device communications for Cashflow 9500 Coin Acceptor and multi-device comms.	SAL-120-WIN
Enable the use of Cashflow Programming Module (HII) for Cashflow 9500 in STS.	SAL-121-WIN
Added Database Version Number & updated so structure can be auto-updated in the future.	SAL-122-WIN
Added Import, Export and Delete functionality for Audit Records	SAL-123-WIN





Added CUF (Coin Update File) generation for HII products.	SAL-126-WIN
Added Configure To Order (CTO) functionality to configure and test devices (if available).	SAL-118-WIN
Generate Build/CTO Instructions - added report generating functionality with physical build descriptions (if available).	SAL-119-WIN

### **BUG FIXES**

Description	Reference
When BIN files for SC Series became too large, could not save in a Configuration File.	SAL-124-WIN
When the first digit of an SC Series CRC value is a 0, this was not displayed.	KDME-64SNXA
Issues with Handheld Registration - Registration is now automatic.	JADE-65HERP